



For Sale

Bezuidenhoutseweg 129

2594 AE Den Haag

Town house, Terraced house 393m²

Vraagprijs € 2.295.000 k.k.

Price	€ 2.295.000 k.k.
Decoration	Fully furnished, Partly furnished
Status	Available
Acceptance	In consultation
House type	Town house, Terraced house
Build type	Existing
Build year	1890
Maintenance	Excellent
Maintenance outside	Excellent
Particulars	Monumental house
Living surface	393m ²
Plot surface	209m ²
Volume	1.358m ³
Rooms	12
Bedrooms	5
Bathrooms	3
Floors	4
Facilities	Alarm
Energy label	B
Isolation	Partial insulated glazing
Hot water	Central heating
Heating	Central heating
Furnace	(Combined furnace, Owned)
Location	In residential area
Garden	Backyard
Backyard	Southeast, 104m ² , 800×1300cm

Spacious luxurious move-in ready historic mansion of 393m² + 20m² dry basement with 6 bedrooms and rich historic plastered ceilings, 4 electric toilets, 3 bathrooms, 5 fireplaces of which 4 electric and 1 wood-burning fireplace, beautiful private garden (95m²) and south-facing balcony (14.5m²) around the corner from the Royal Palace in the trendy Bezuidenhout district. around the corner from the Haagse Bos, Central Station, New Babylon, The Hague city center and the cozy Theresiastraat with all shops and restaurants.

Layout:

Ground floor:

Entrance, hallway, corridor, bathroom with shower and electric toilet, bedroom/home office, living room, shower, conservatory, utility room, laundry room, garden with terrace and ambient lighting.

First floor:

Landing, living room, dining room, conservatory, kitchen, library, and electric toilet.

Second floor:

Landing, 2 bedrooms with walk-in closets, terrace, bathroom with bathtub and separate shower, and separate electric toilet.

Third floor:

Landing, 2 bedrooms with study, bathroom with bathtub and separate shower, and separate electric toilet.

Key features:

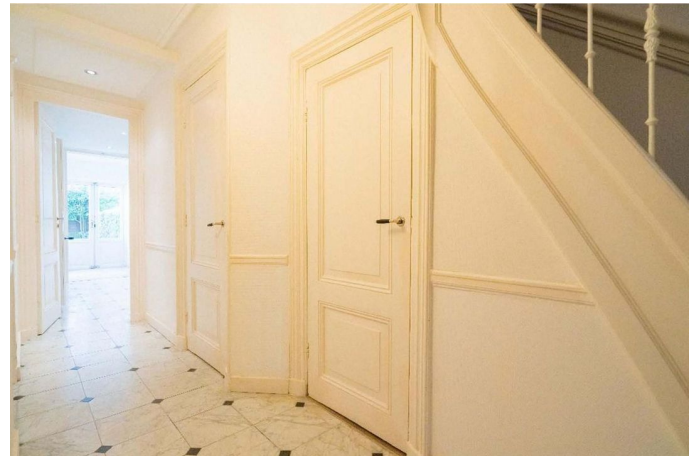
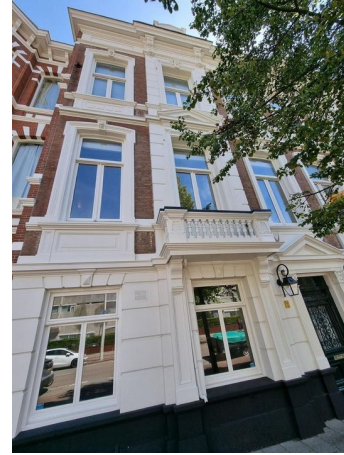
- energy label B
- 6 bedrooms
- 4 electric toilets and 3 bathrooms, with 2 bathtubs and 3 showers
- 6 fireplaces, 4 electric and 1 traditional wood-burning fireplace
- 4.20-meter high ceilings with original 1890 plasterwork over 3 floors
- wooden herringbone floors
- well-maintained southeast-facing garden of approx. 100 m² (7 meters wide and 14 meters deep) with atmospheric lighting
- renovated terrace with atmospheric lighting
- recently painted inside and out
- southeast-facing terrace on the second floor
- basement of 20 m²
- external sun shades, TV cable, alarm system, video intercom, and flue
- the layout is ideal for combining living and working
- for measurements, see the floor plans
- due to the age of the property, an age and materials clause applies

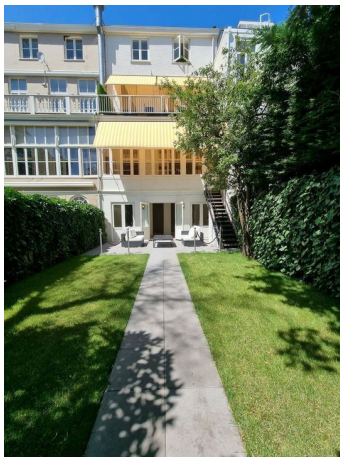
Accessibility:

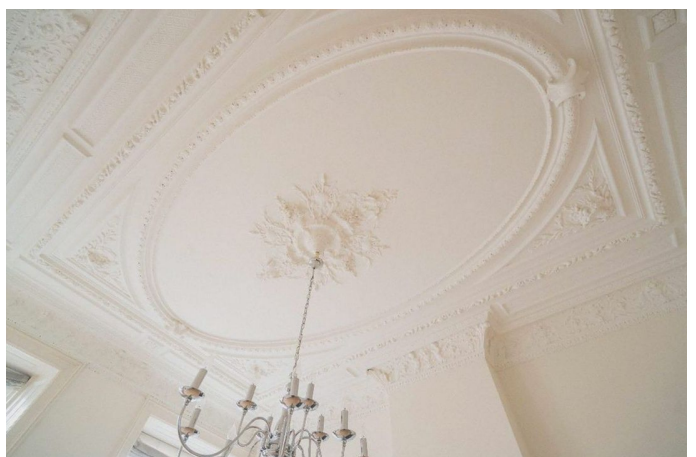
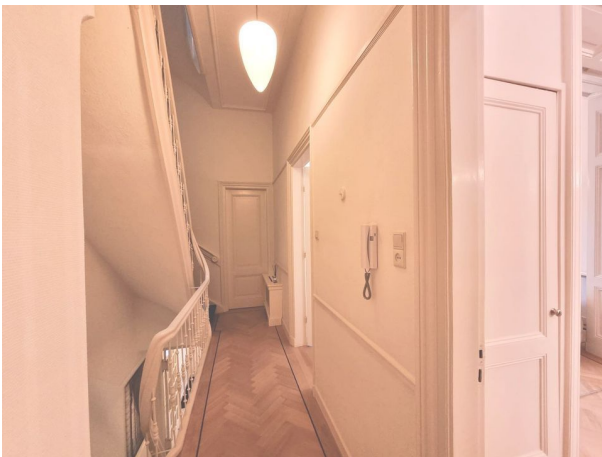
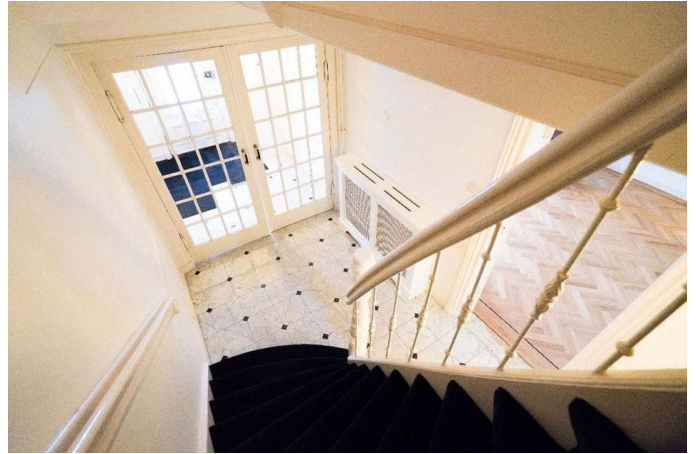
- train station: 10-minute walk
- bus stop: 2-minute walk
- city center: 8-minute bike ride
- highway exit: 1-minute drive
- supermarket: 3-minute walk

- daycare: 1-minute walk
- primary school: 10-minute walk
- secondary school: 2-minute walk

This information has been compiled by our office with the greatest care, based in part on data provided by the seller. Estata accepts no liability for any incompleteness, inaccuracies, or otherwise, nor for the consequences thereof.

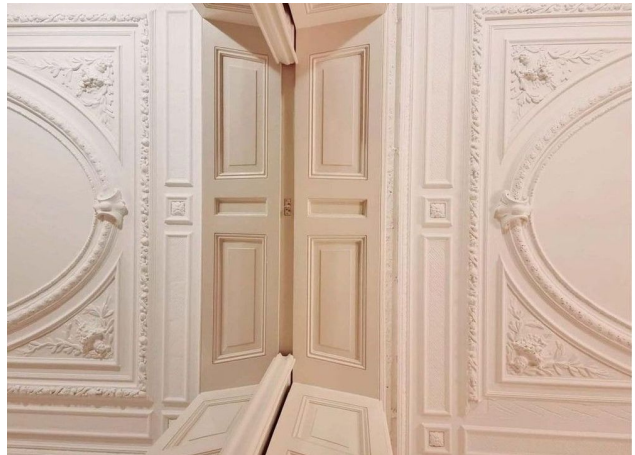








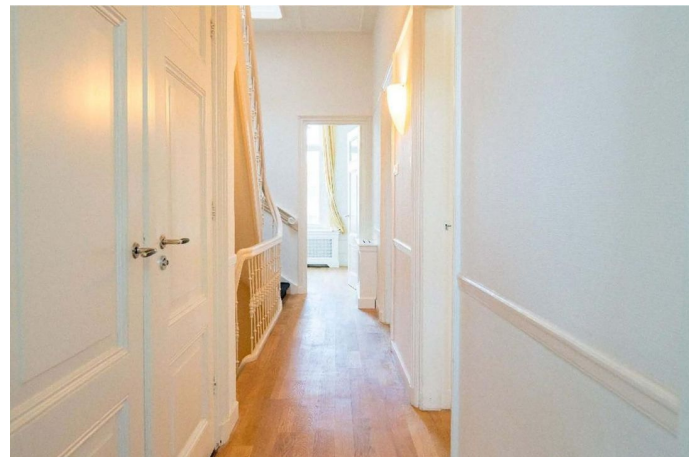
1FL
Living Room
With Library
And TV





1FL
Kitchen



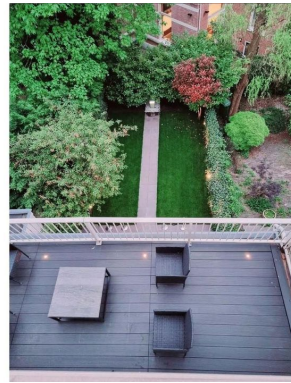




3FL
Room

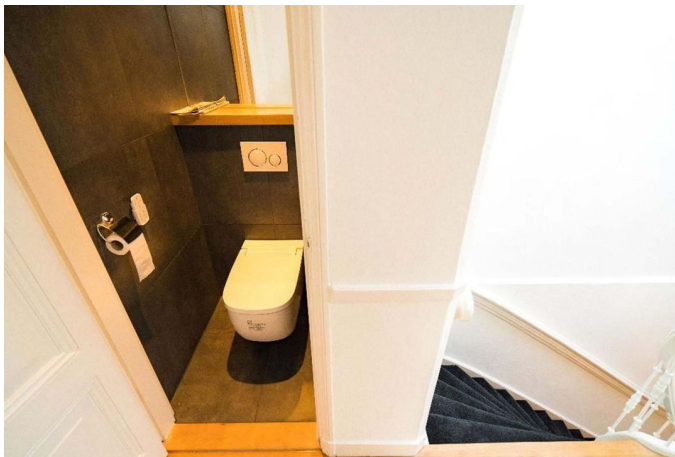
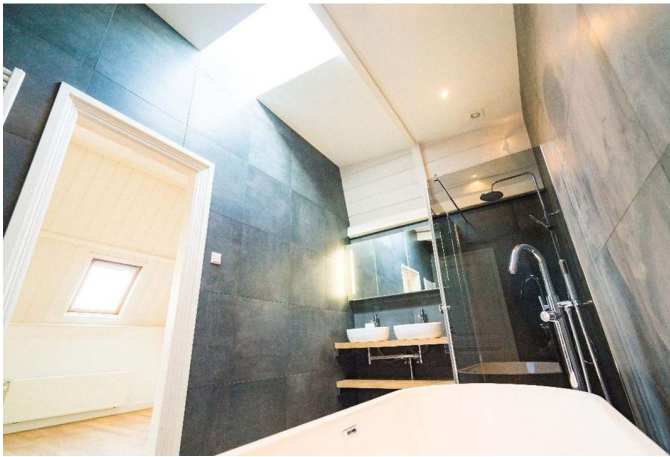


3FL
Look onto Terrace and Garden



3FL
Look onto Terrace and Garden





The Hague, Bezuidenhoutseweg



